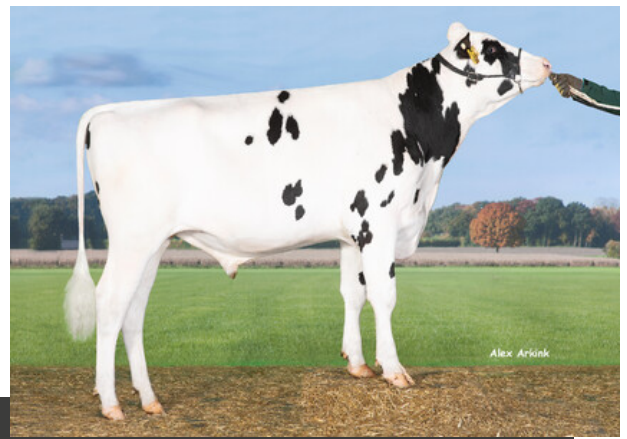
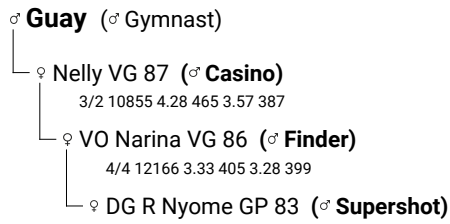


# Geronimo

H1C  
**159024** born: 13.01.2021  
 HOLDEUM000363438236  
**aAa 342561**



Holstein

Geronimo

<b>RZG</b> <b>148</b> 82 %	<b>RZ€</b> <b>2023</b> 84 %	<b>RZM</b> <b>141</b> 75 %	<b>RZE</b> <b>124</b> 73 %	<b>RZS</b> <b>113</b> 77 %	<b>RZN</b> <b>120</b> 68 %	<b>RZR</b> <b>102</b> 55 %	<b>RZKd</b> <b>99</b> 87 %	<b>RZKm</b> <b>111</b> 65 %	<b>RZD</b> <b>89</b> 77 %
----------------------------------	-----------------------------------	----------------------------------	----------------------------------	----------------------------------	----------------------------------	----------------------------------	----------------------------------	-----------------------------------	---------------------------------

<b>RZhealth</b>	<b>116</b>	73 %
<b>RZudderfit</b>	<b>106</b>	64 %
<b>RZhoof</b>	<b>107</b>	55 %
<b>RZmetabol</b>	<b>111</b>	58 %
<b>RZrepro</b>	<b>106</b>	55 %
<b>RZcalfhealth</b>	<b>97</b>	66 %
<b>DDcontrol</b>	<b>107</b>	55 %

<b>RZRobot</b>	---	-- %
<b>RZorganic</b>	<b>134</b>	82 %
<b>RZpersistence</b>	<b>123</b>	64 %
<b>RZFeedEfficiency</b>	<b>101</b>	41 %
Caseine	<b>AE / A1A2</b>	
Milk	Fat	Protein
<b>+1035 kg</b>	<b>+0.40 %</b>	<b>+0.07 %</b>
	<b>+86 kg</b>	<b>+44 kg</b>
Reliability	<b>75 %</b>	
Daug./ Herds	- / -	



Nelly

Type traits							
Daughters	Herds	Reliability	D.type	Body	F & L	Udder	
-	-	<b>73%</b>	<b>110</b>	<b>113</b>	<b>111</b>	<b>116</b>	

		76	88	100	112	124	
Stature	small			█			104 tall
Rib Structure	flat			█			105 arched
Body depth	shallow			█			103 deep
Strength	narrow			█			102 wide
Rump angle	ascending			█			98 sloped
Rump width	narrow			█			117 wide
Rear leg angle	straight						100 sickled
Foot angle	low angle			█			106 steep angle
Hocks	swollen			█			101 clean
Rear leg set r.v.	toes out			█			103 parallel
Front Feet Orientation	outward			█			97 straight
Locomotion	bad			█			108 good
Rear udder h.	low			█			119 high
Suspens. lig.	weak			█			102 strong
Teat placem.f.	wide						100 close
Teat placem.r.	wide			█			98 close
Fore udder att.	loose			█			112 tight
Udder Balance	rear deep			█			122 front deep
Udder depth	deep			█			109 shallow
Teat length	short			█			99 long

Proof: VIT / 04-2024