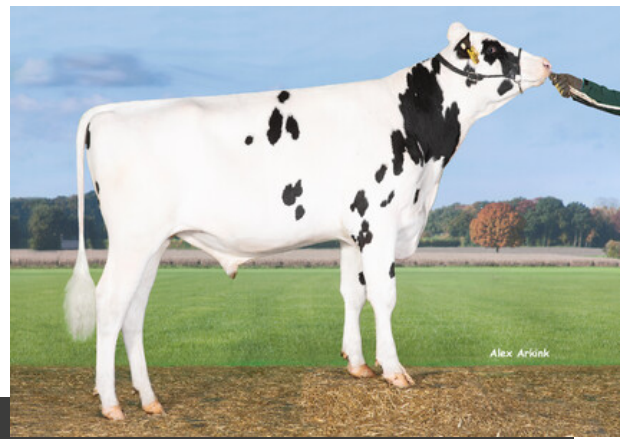
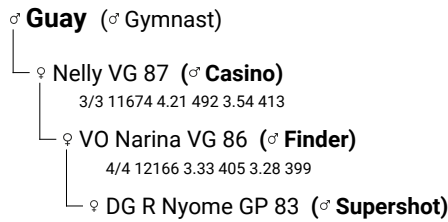


Geronimo

H1C
159024 born: 13.01.2021
 HOLDEUM000363438236
aAa 342561



Holstein

Geronimo

RZG 145 83 %	RZ€ 1831 84 %	RZM 138 76 %	RZE 123 73 %	RZS 112 78 %	RZN 118 68 %	RZR 101 55 %	RZKd 98 90 %	RZKm 110 65 %	RZD 89 77 %
----------------------------------	-----------------------------------	----------------------------------	----------------------------------	----------------------------------	----------------------------------	----------------------------------	----------------------------------	-----------------------------------	---------------------------------

RZhealth	114	73 %
RZudderfit	106	64 %
RZhoof	107	56 %
RZmetabol	109	58 %
RZrepro	105	56 %
RZcalfhealth	94	78 %
DDcontrol	105	55 %

RZRobot	---	-- %
RZorganic	131	82 %
RZpersistence	122	65 %
RZFeedEfficiency	99	42 %
Caseine	AE / A1A2	
Milk	Fat	Protein
+894 kg	+0.42 %	+0.08 %
	+82 kg	+39 kg
Reliability	76 %	
Daug./ Herds	- / -	



Nelly

Type traits							
Daughters	Herds	Reliability	D.type	Body	F & L	Udder	
-	-	73%	109	114	110	116	

		76	88	100	112	124	
Stature	small			█			104 tall
Rib Structure	flat			█			105 arched
Body depth	shallow			█			105 deep
Strength	narrow			█			103 wide
Rump angle	ascending			█			98 sloped
Rump width	narrow			██████████			118 wide
Rear leg angle	straight						100 sickled
Foot angle	low angle			█			106 steep angle
Hocks	swollen			█			101 clean
Rear leg set r.v.	toes out			█			103 parallel
Front Feet Orientation	outward			█			96 straight
Locomotion	bad			█			108 good
Rear udder h.	low			██████████			119 high
Suspens. lig.	weak			█			102 strong
Teat placem.f.	wide						100 close
Teat placem.r.	wide			█			98 close
Fore udder att.	loose			██████████			112 tight
Udder Balance	rear deep			██████████			122 front deep
Udder depth	deep			█			109 shallow
Teat length	short			█			99 long

Proof: VIT / 08-2024